



### Good News

- Nichole McMahon (Tecumseh) and Destiny Smith-Stout (Blackwell) have qualified to apply for the Oklahoma Foundation for Excellence Academic All-State scholarship by virtue of their performance on the October SAT;
- Emily Kish (Weatherford) has been named a Presidential Scholar at Albright College and awarded a \$50,000 scholarship for four years of study;
- Daniel Freno (Oklahoma City) has been admitted to the University of Missouri, Rolla.

### Middle East Expert Speaks at Assembly

One of Oklahoma City's most respected community leaders spoke this week at the OSSM Wednesday assembly. Rabbi A. David Packman gave students a concise history (limited somewhat by the brief time he had to speak) of the conflict between Israel and the Palestinians, and explained his own theories and predictions about the future of the advisories.

Rabbi Packman is originally from Philadelphia, and found his calling in life while studying archeology at the University of Pennsylvania. He graduated cum laude with honors from Penn and then from Hebrew Senior College. He was ordained in 1964, received an M.A. in social work, and then served as a chaplain in the US Air Force. In 1986, he was awarded a Doctor of Divinity degree by Oklahoma City University, and another doctorate in divinity from Hebrew Union College-Jewish Institute of Religion in 1989.

Dr. Packman has served as Rabbi for Oklahoma City's Temple B'nai Israel since 1976. He has been active in interfaith work to establish relationships and dialogue in the Oklahoma City community, and is the organizer of Oklahoma's most inclusive Thanksgiving Service which embraces Catholics, Protestants, Jews, Bahais, Muslims, Hindus, Unitarians, and people of all races.

Rabbi Packman is a scholar concerning the affairs of the Middle East, and has traveled extensively in that part of the world.

### Counselor's Corner

**Late Breaking News:** Representatives from **St. Olaf College** (Northfield, Minnesota) will be visiting Oklahoma City on Saturday, November 6, from 5:00 - 7:30 p.m. at the Residence Inn by Marriott, downtown. They will be in Tulsa on Sunday, November 7, at Hideaway Pizza from 2:30 - 4:00 p.m.

Morgan Boes' (Owasso, '06) sister attends St. Olaf and her mother asked that we announce this opportunity to look into the college.

A representative from **Southern Methodist University** will visit on Wednesday, November 17.

Reminder: we will keep you up-to-date about college representative visits in this newsletter, but for a complete list of college representatives visiting the campus, please refer to Professor Gleason's page on the OSSM website.

### PAOSSM NEWS

([www.paossm.org](http://www.paossm.org))

The junior parents elected officers last Monday evening at the PAOSSM monthly meeting. Many thanks to these folks for their willingness to serve:

- Grace and Albert Chen (Alfred, Shawnee)
- Lisa and Max Hoskins (Zak, Lawton)
- Fahmida Khan (Nusaybah, Edmond)
- Bina and Gopal Ranebenur (Lasya, Edmond)
- Ivone Torres-Jerez and Rodolfo Acosta-Leal (Stefany, Ardmore)

### Eye on Sports

from Coach Armstrong

The 15th Annual Junior/Senior Flag Football game will be held on Friday, November 12, at 4:45 p.m. There will be eight players on each side -- the girls will play the 1st and 3rd quarters, boys will play the 2nd and 4th quarters. All students are eligible to play, and organizers MUST insure that everyone who wants to play has a chance to do so.

**COME WATCH THE FUN!**

### Happy Birthday to:

Katie Weston	November 8
Jason Chen	November 9
Dr. Ann Dell	November 9
Krista Owen	November 10
Jennifer Li	November 12
Matt Stanley	November 12
Jennifer Rooth	November 13
Mrs. Pi Johnston	November 14

## Humanities Faculty continued . . . the Historians

**Dr. Chris Hamel** taught Western Civilization at OSSM during the 2000/2001 academic year, but left us for two years to complete his graduate work. He returned to OSSM (with his wife, Professor Karen Hamel) in 2003 when he took on the additional responsibilities of Assistant Dean of Students. Dr. Hamel earned a BA in history with a minor in anthropology and a MA in history at the University of Oklahoma. His PhD in international history is from Michigan State University. Dr. Hamel has held teaching positions at Michigan State University, University of Detroit (Mercy campus), Saint Anselm College in New Hampshire, Oklahoma City University, and Trent University in Ontario, Canada.

Although Dr. Hamel now calls Oklahoma home and OSSM his “hometown,” he is a native Charlestonian. He says, “It was great growing up in Charleston, South Carolina, a place steeped in culture and history.... It was where I first cut my teeth on history.” While serving in the USAF in the 70’s, Dr. Hamel caught the “Asia bug,” which has evolved into a lifelong fascination with all things Asian. He has traveled extensively throughout Asia, particularly Southeast Asia, and has lived and worked in the Philippines for a number of years. Dr. Hamel’s academic research and publications continue to focus on the United States’ relationship with that part of the world.

Dr. Hamel is a voracious reader, particularly in history and philosophy. Yet, his favorite book is a work of fiction, W. Somerset Maugham’s *The Razor’s Edge*. He has also been known to plug Homer’s *Iliad* to just about anyone who will listen. Dr. Hamel loves music, particularly jazz (which his daughter Tara introduced to him) and the *Moody Blues*, and is an admiring fan of the Impressionists.

Dr. Hamel is married to Professor Karen Hamel, has two daughters (Tara and Amanda), a son (David), a granddaughter (Erin), and has special claims to Kristin Anthony.

**Professor Bill L. Turpen**, Master Sergeant, retired, is a member of the OSSM Inaugural Faculty. He teaches American History I and II, and East Asian History. During some semesters at OSSM, Professor Turpen also teaches a course in Arab Civilization. In his teaching career, Professor Turpen has also taught German and Russian languages, and has been a high school principal.

The professor earned his BSEd and MA from Oklahoma State University, where he served as a graduate teaching assistant in two departments. He has also been an adjunct instructor for Dallas County Community Colleges, Chapman University, Park University, Western Oklahoma State College, and Redlands Community College. Professor Turpen spends most summers continuing his education at various seminars and institutes at such places as the University of Michigan, Ohio State University, Dar al Islam, the University of New Mexico, James Madison University, the University of Oklahoma, Ryazan’ State Pedagogical University (Russia), and has spent three summers at the American Center of Oriental Research, Amman, Jordan. He has taught English at Fujian Normal University, Fuzhou, China. During the summer of 2002, Professor Turpen completed a two-semester Serbian language course in seven weeks at Arizona State University’s Critical Languages Institute.

Professor Turpen is currently recovering from heart surgery. Last week he was dismissed from the hospital, but this week he was readmitted with pneumonia. We know you join us in wishing him a full and speedy recovery. We will continue to keep you informed of his condition.

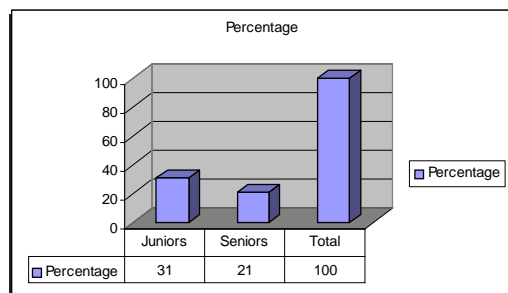
During his absence, Dr. Chris Hamel is covering his classes, while Mrs. (Professor) Hamel helps out with Dr. Hamel’s Western Civilization classes.



## Thank you to . . .

. . . the many students who have given tours and allowed themselves to be shadowed recently: seniors Emily Kish (Weatherford), Chris Crowe (Ardmore), and David Eyster (Ponca City); and juniors Ryan Fowler (Glenpool), Geraint Harris (Burns Flat), Katie Southard (Ponca City), Morgan Boes (Owasso), Nozlee Samadadeh (Stillwater), Luke Nowlin (Grove), Patrick VerSteege (Cheyenne), Becky McMillan (Tulsa), Amber Loftis (Bartlesville), Jennifer Li (Edmond), Zoheb Hajiyani (Anadarko), Jordan Yozzo (Tulsa), Lucy Liu (Edmond), Kelly Coney (Ft. Gibson), Sarah Copley (Marlow), Christian Clanton (Guthrie), Anh Tran (Oklahoma City), David Walker (Duncan), and Alfred Chen (Shawnee).

### YEARBOOK SPONSORSHIPS STATUS



The graph to the left shows the percentage of seniors and juniors who have secured sponsors. This is **not the total number of sponsors we have from each class**, just the number of students who have sponsors. Quite a few students have more than one sponsor. The graph at the right show where we stand financially toward our goal of raising \$5,500.

